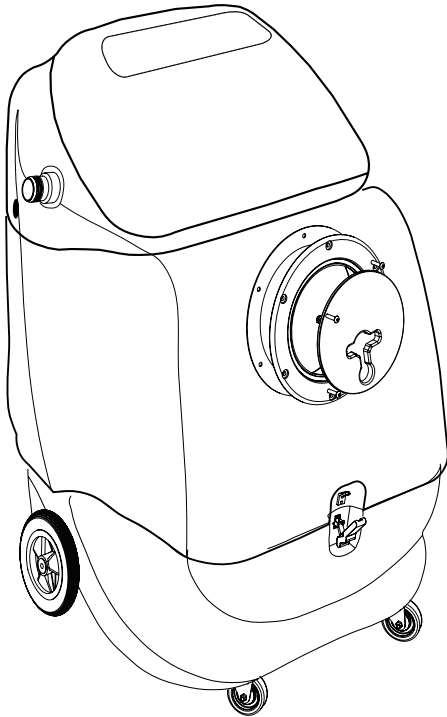


CLEANMASTER

100-610-300 FLOODMASTER 120V



INFORMATION & OPERATING INSTRUCTIONS



CAUTION: DO NOT OPERATE MACHINE UNTIL YOU HAVE READ ALL SECTIONS OF THIS INSTRUCTION MANUAL

IMPROPER USE OF THE MACHINE WILL VOID THE WARRANTY

1. Always use a defoamer when foaming occurs to prevent vacuum motor damage.
2. Use the pre-filter bag to catch all large debris. Clean all filters as necessary.
3. Before each use, check the machine and tools for readiness.
4. Keep machine from rain, snow, and extremes in temperatures. Store the machine in a heated location. Use the machine indoors. Do not use outdoors.
5. Always empty the recovery tank when filling the solution tank.
6. Do not let the pump run dry for extended periods.
7. Use the FloodMaster indoors only.

IMPORTANT SAFETY INSTRUCTIONS

This machine is only suitable for commercial use, for example in hotels, schools, hospitals, factories, shops, and offices. This machine is not intended for normal residential housekeeping purposes.

NOTE: Read all instructions before using this machine.

When using any electrical appliance, basic precautions should always be followed, including the following warnings and cautions:

WARNING!

To reduce the risk of fire, electric shock, or injury:

- Do not leave the machine unattended when it is plugged in. Unplug the unit from the outlet when not in use and before servicing.
- To avoid electric shock, do not expose to rain or snow. Use and store indoors.
- Do not allow to be used as a toy. Close attention is necessary when used near children.
- Use only as described in this manual. Use only the manufacturer's recommended attachments.
- Never add water over 130° F/54° C to the solution tank.
- Do not use with damaged cord or plug. If the machine is not working as it should, has been dropped, damaged, left outdoors or dropped into water, return it to a service center.
- Do not pull by the cord, use the cord as a handle, close a door on the cord, or pull the cord around sharp edges or corners. Do not run the machine over the cord. Keep the cord away from heated surfaces. To unplug, grasp the plug, not the cord.
- Do not handle the plug, the cord, or the machine with wet hands.
- Extension cords must be 12/3 and no longer than 50 feet. Replace the cord or unplug immediately if the ground prong becomes damaged.
- Do not put any object into openings. Do not use with any opening blocked; keep free of dust, lint, hair, and anything that may reduce air flow.
- Keep loose clothing, hair, fingers, and all parts of body away from openings and moving parts.
- Do not pick up anything that is burning or smoking, such as cigarettes, matches, hot ashes, or any health endangering dusts. Do not use to pick up flammable or combustible liquids such as gasoline or use in areas where these liquids may be present.
- Turn off all controls before unplugging.

CAUTION

- Use extra care when cleaning on stairs.
- Connect to a properly grounded outlet only.
- Use a defoamer at the first sign of foam to prevent damage.

Record the serial number and model of your new FloodMaster here: (and be sure to mail your warranty card)

Serial Number: _____ **Model:** FloodMaster

Purchase Date: _____

Write the name and phone number of the distributor from whom you purchased this machine: _____

SET-UP:

Install the pre-filter bag at the vacuum inlet. Connect the vacuum/recovery hose to the vacuum inlet hose barb on the recovery tank. Connect the dump hose to the hose fitting on the rear of the machine. Check filters to make sure they are in place and clean. Put the lid on the recovery tank. Plug the machine into a grounded outlet.

VACUUM OPERATION:

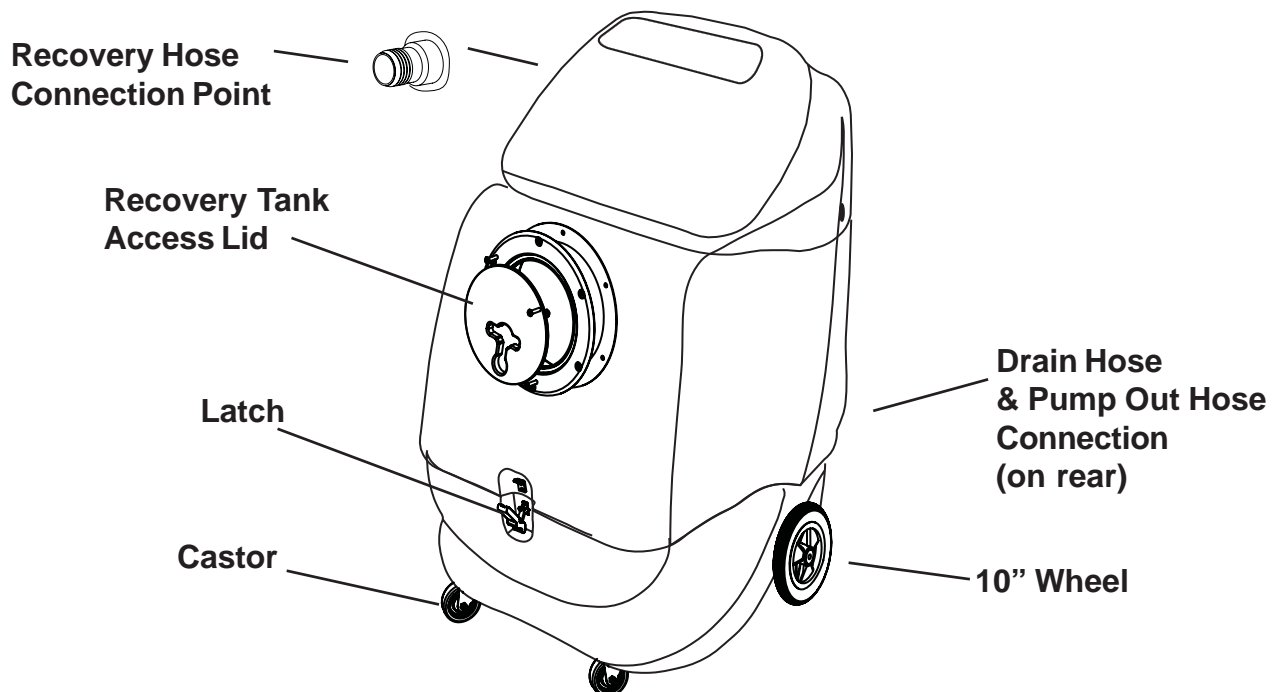
A switch is provided for each vacuum motor. The machine can operate with one, or both vacuum motors running.

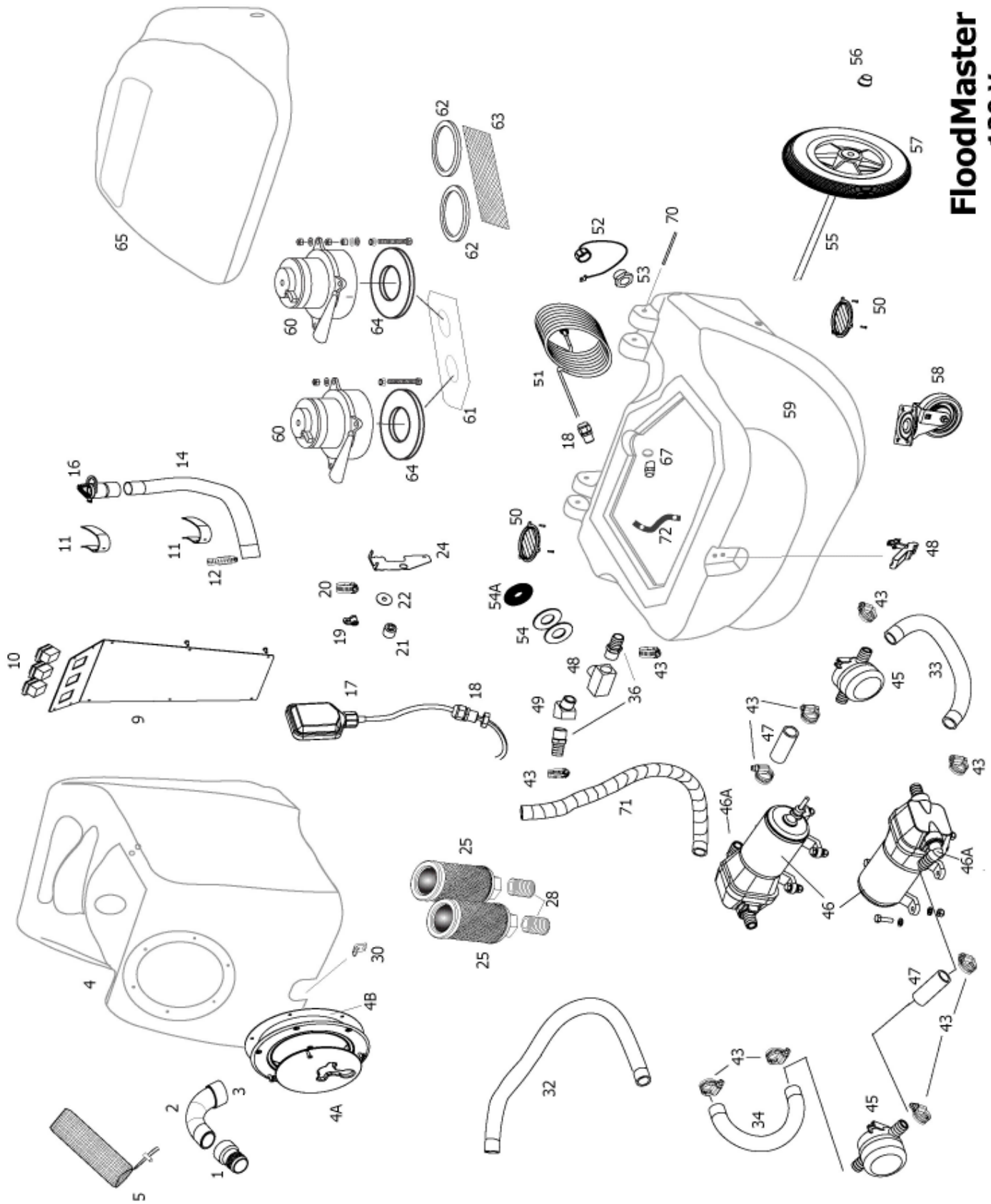
VACUUM SHUT-OFF:

When the recovery tank is full, the float system will shut off power to the vacuum motor(s) to prevent water from entering the motor(s). The float may not work properly if it is extremely dirty or if there is foam in the tank. Use a defoamer any time foam is present. Once the tank has emptied sufficiently, the vacuums will come back on automatically.

PUMP OPERATION:

Always be sure to uncap the pump-out fitting and connect the dump hose before turning the pumps on. Failure to do so may result in blown hoses or loose fittings and water will damage motors and switches. The two diaphragm pumps on your FloodMaster work together. When you turn the pump switch on, both pumps will run, and they will continue to run until you turn them off. Do not let the pumps run dry for extended periods of time.





FloodMaster 120 V 6-19-08

FloodMaster

PART LIST

120V

<u>Item</u>	<u>Part No</u>	<u>Description</u>	<u>Item</u>	<u>Part No</u>	<u>Description</u>
1	2077	Hose Barb, 2"	45	2074	Filter, in line, 50 mesh
2	1463	Elbow, ABS, 45 degrees (3)	46	2067	Pump, dump
3	1464	Bushing, 2" slip	46A	1466	Hose barb/elbow
4	VT-33	Tank, recovery	47	1468	Hose, 3/4" ID X 3"
4A	2070B	Lid, 6", vac, with mounting ring	48	908A	Latch
4B	1129	Gasket, for vacuum lid	49	372	Elbow, brass, 45 degree
5	FP521	Strainer bag, vac inlet	50	928	Louver, 3", includes screws
9	1434	Switch plate	51	495A	Power cord, 25 ft, 12/3
10	FP578	Switch, SPST	52	237	Cap, with chain
11	1130	Strap, hose retainer, loop & hook	53	379	Hose fitting
12	1518	Hose Clamp	54	152A	Washer, flat, S/S
14	1060B	Hose, drain	54A	237A	Washer, rubber
16	1060C	Plug, drain hose	55	910	Axle, 24-1/2" long
17	2068	Float, switch	56	27A	Axle cap
18	230	Retainer, cord	57	2084	Wheel, 10"
19	196	Clamp, cable	58	905	Castor. 4"
20	1518	Hose Clamp	59	FP	Base, black
21	1349	Spacer, float	60	408E	Vacuum motor, 3-stage
22	290	Washer, flat, rubber	61	MA-9	Manifold, vacuum
24	1350	Bracket, float mounting	62	1477	Gasket, under Vac Manifold
25	2069	Filter, inlet, 60 mesh, S/S	63	1056	Screen, wire filter, vac inlet
28	1168	Nipple, PVC, 3/4 X 1-3/8"	64	2013A	Gasket, under vac motor
30	909A	Strike, for latch	65	FP523	Cover, over vacuums
32	1468	Hose, 3/4" ID X 22"	67	937	Coupling, PVC
33	1468	Hose, 3/4" ID X 14"	70	801	Hinge Pin
34	1468	Hose, 3/4" X 13"	71	2079	Hose, reinforced, 10"
36	378	Hose barb, brass	72	1476	Strap, stop
43	380	Hose clamp			

MISCELLANEOUS PARTS

919C	Vacuum Inlet Hose
717	Hose Cuff, for Vac Hose
956A	Drain Hose, 50 ft
971	Bag, Mesh, for hoses

FloodMaster

120V

SPECIFICATIONS:

- POWER CORD:** One, 25 ft, 12 gauge, 3-wire with hospital grade plug
- POWER CONSUMPTION:** 13 Amps, total
- RECOVERY CAPACITY:** 9 gallon
- VACUUM INTAKE HOSE:** 2' X 25'
- VACUUM MOTOR(s):** Two 3-stage vacuum motors
- WATER LIFT/CFM:** 100 inches/170 cfm
- AIR WATTS:** 520 AW (in operational range)
- OVERFLOW PROTECTION:** Electronic Float / Auto ON/OFF
- DISCHARGE PUMPS:** Two diaphragm bilge pumps
- DISCHARGE HOSE:** One 3/4" X 50'
- DISCHARGE RATE:** 10.5 GPM
- FILTER SYSTEM:**
- One 80 micron polyester mesh strainer at the water inlet to the recovery tank
 - Two 50 mesh S/S filters in recovery tank
 - Two 50 mesh S/S screens in-line
- WEIGHT:** 85 LBs

CLEANMASTER

11015 47TH Avenue West
Mukilteo, WA 98275

PH. 1-425-775-7276

www.cleanmaster.com

FAX: 1-800-426-4225